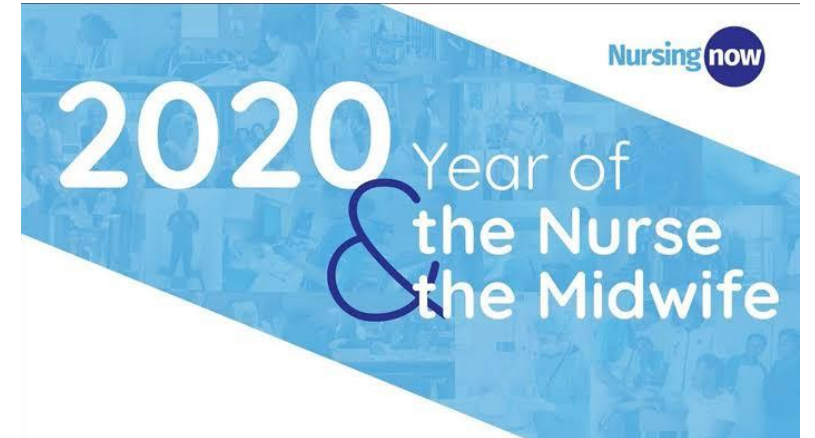




Karen Walker

Josephine Gatwiri Bariu

A/Prof Karen Walker, President, COINN



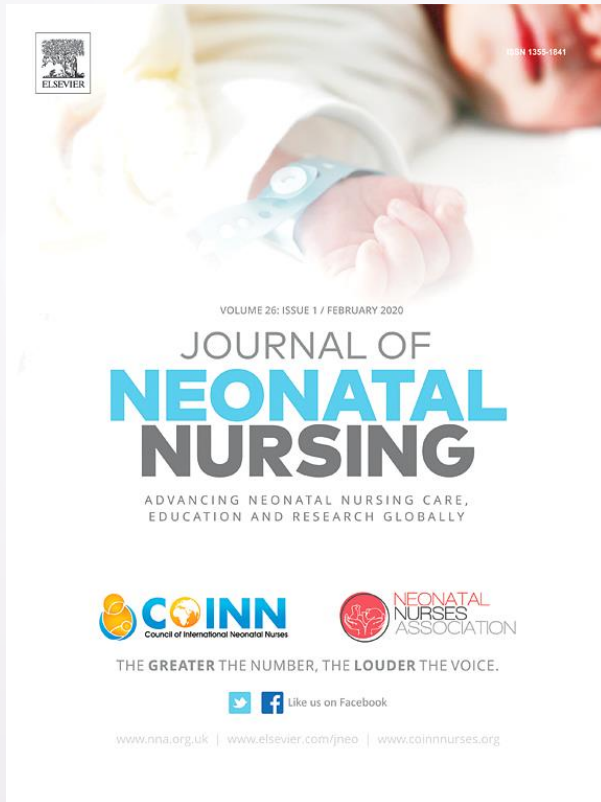


COINN Kenya
Nairobi
November
14-15th 2019

COVID-19

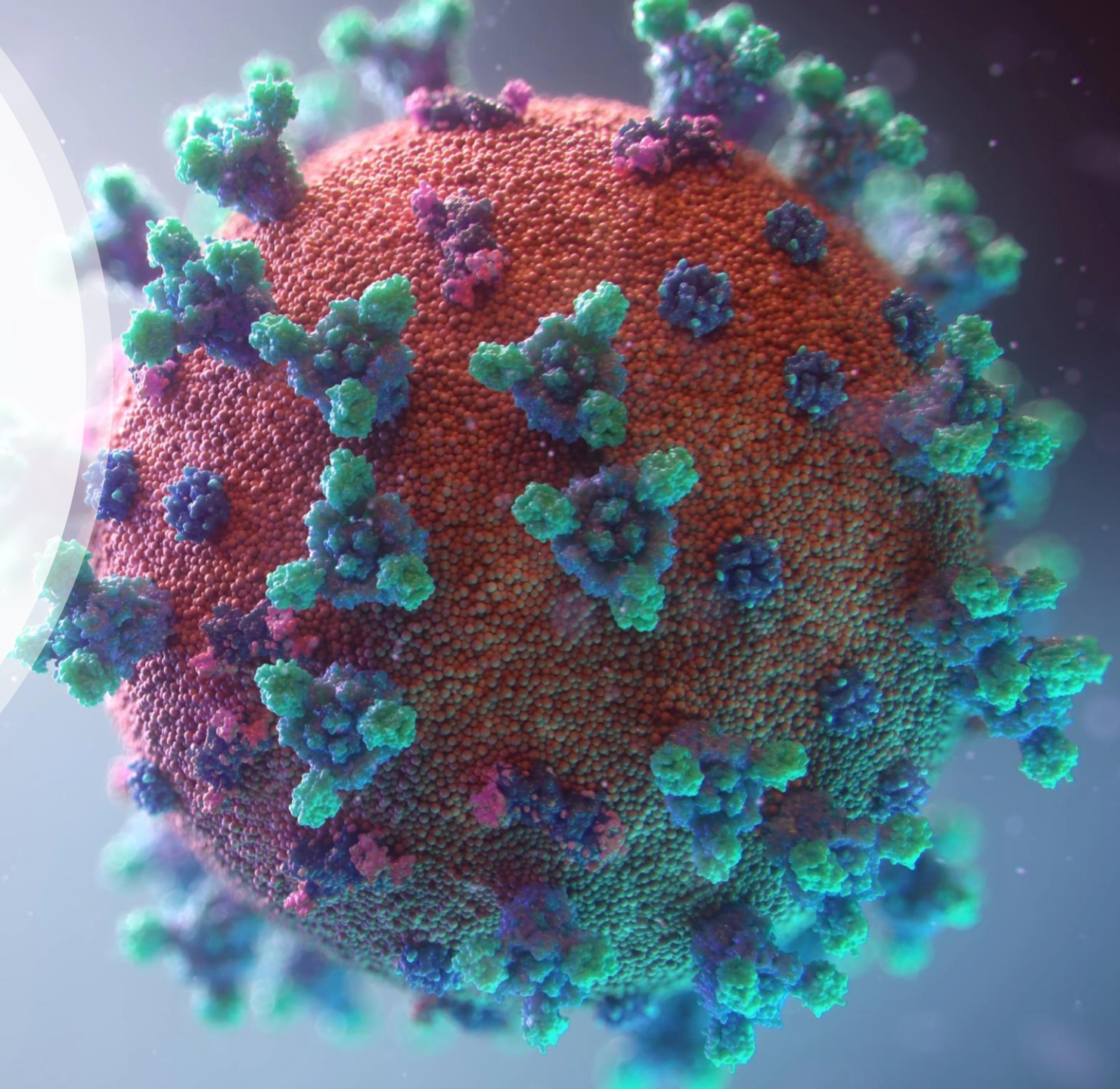


What are coronaviruses and COVID-19
Australian experience
Challenges for us all



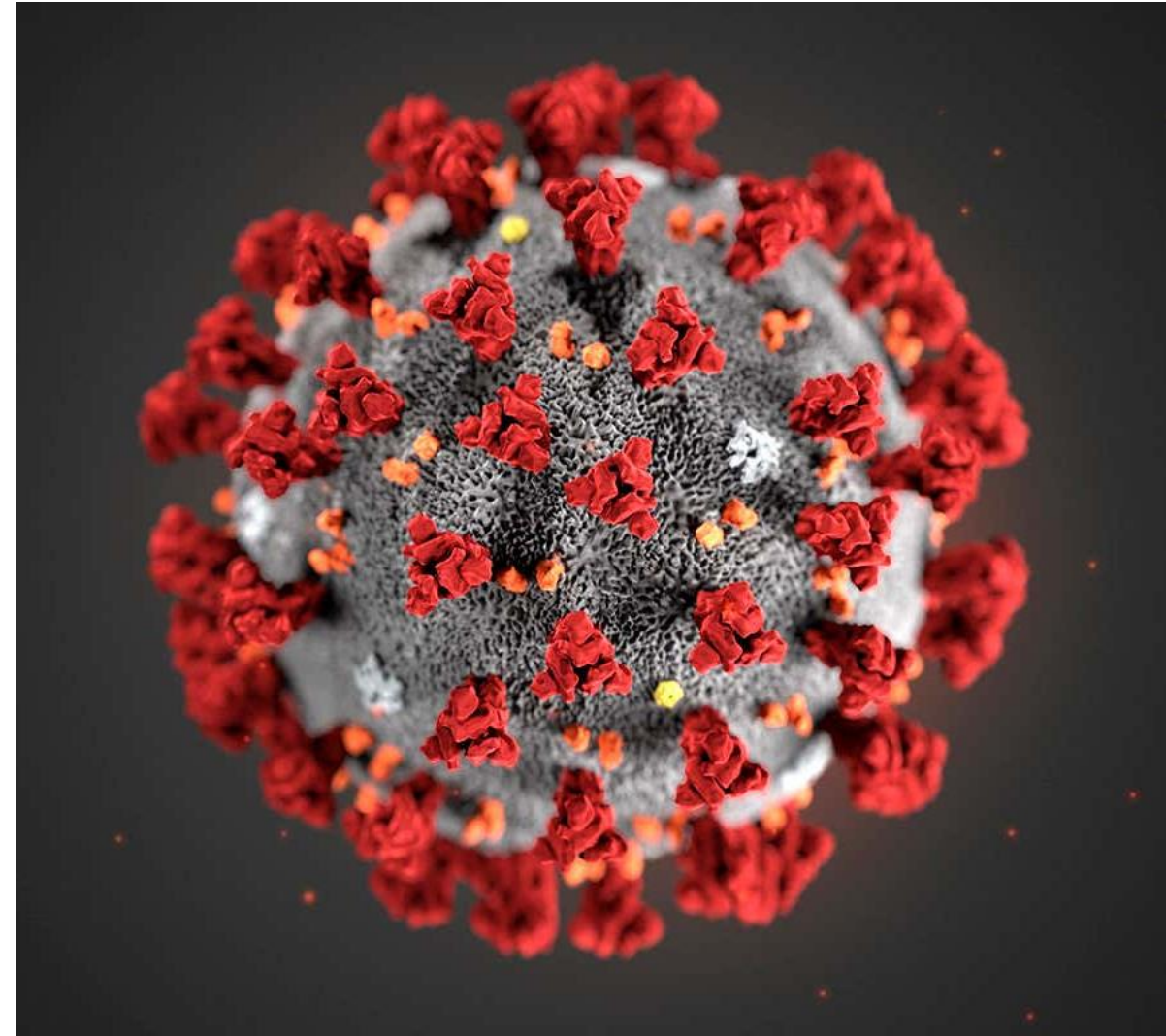
COVID 19 IN BABIES: KNOWLEDGE FOR NEONATAL CARE

Green J, Bromley P, Petty J, Walker K,
Jones L; In press



What are Coronaviruses?

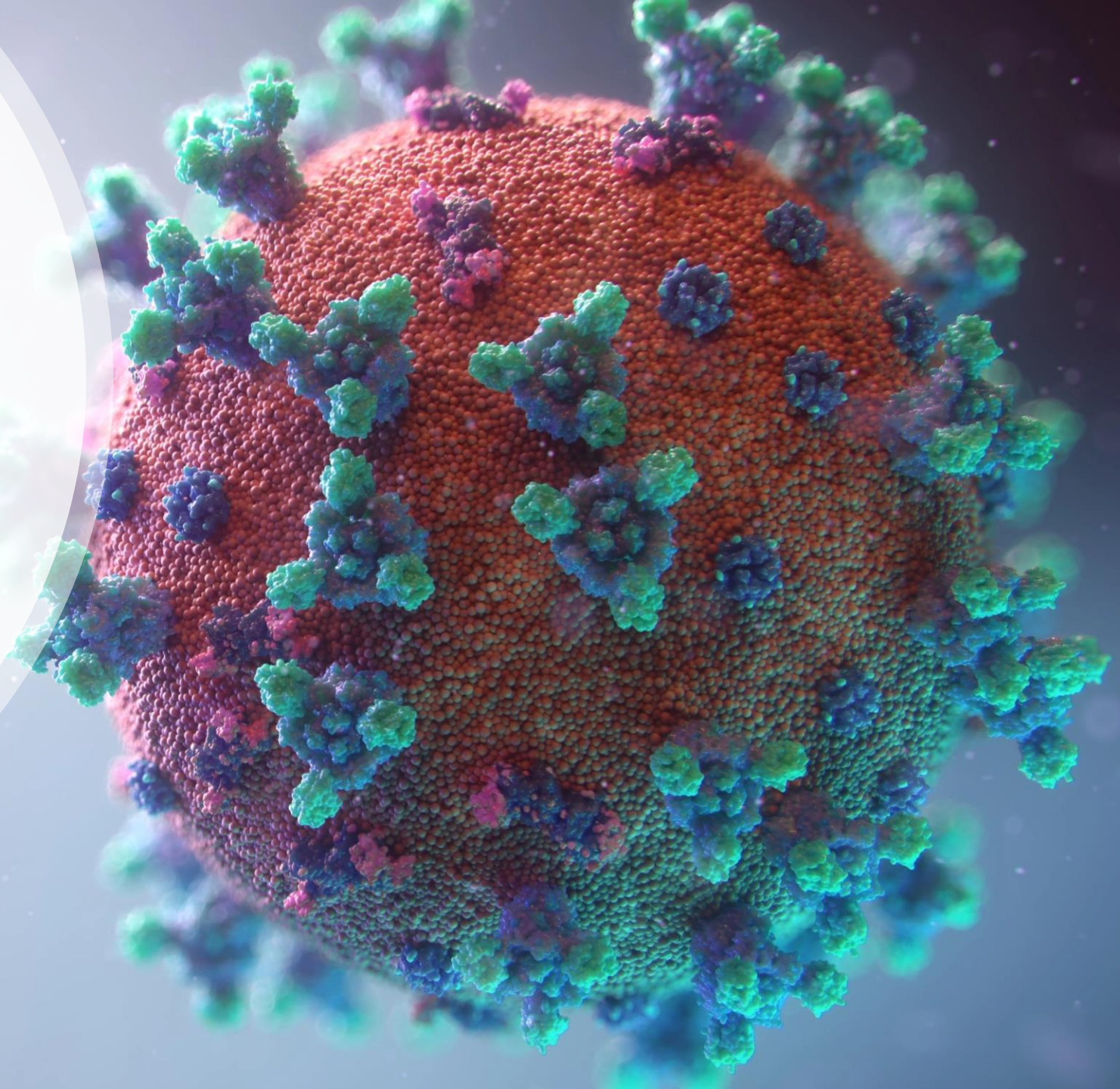
- Coronaviruses are a large family of viruses
- Includes the common cold, Middle East Respiratory Syndrome (MERS) and Severe Acute Respiratory Syndrome (SARS)
- Coronaviruses have been around for many years
- Humans have built an immunity to them - such as the common cold
- A new strain of coronavirus is called a 'novel' coronavirus (CDC, 2020)
- This virus is called severe acute respiratory syndrome coronavirus 2 or **SARS-CoV-2**



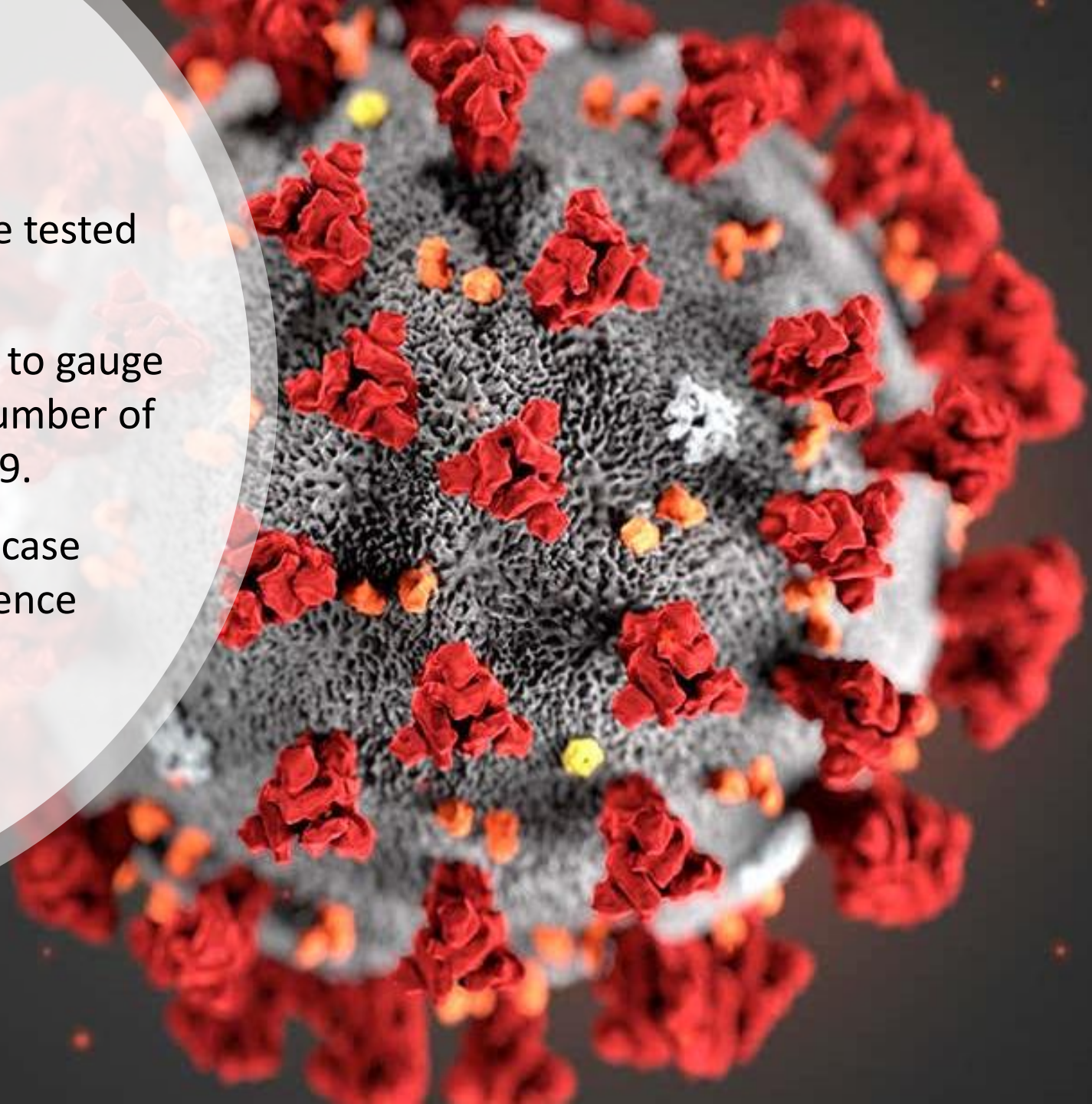
Covid-19 a clinical syndrome caused by the coronavirus

It became a pandemic following an outbreak of viral pneumonitis, first identified in Wuhan, Hubei, China

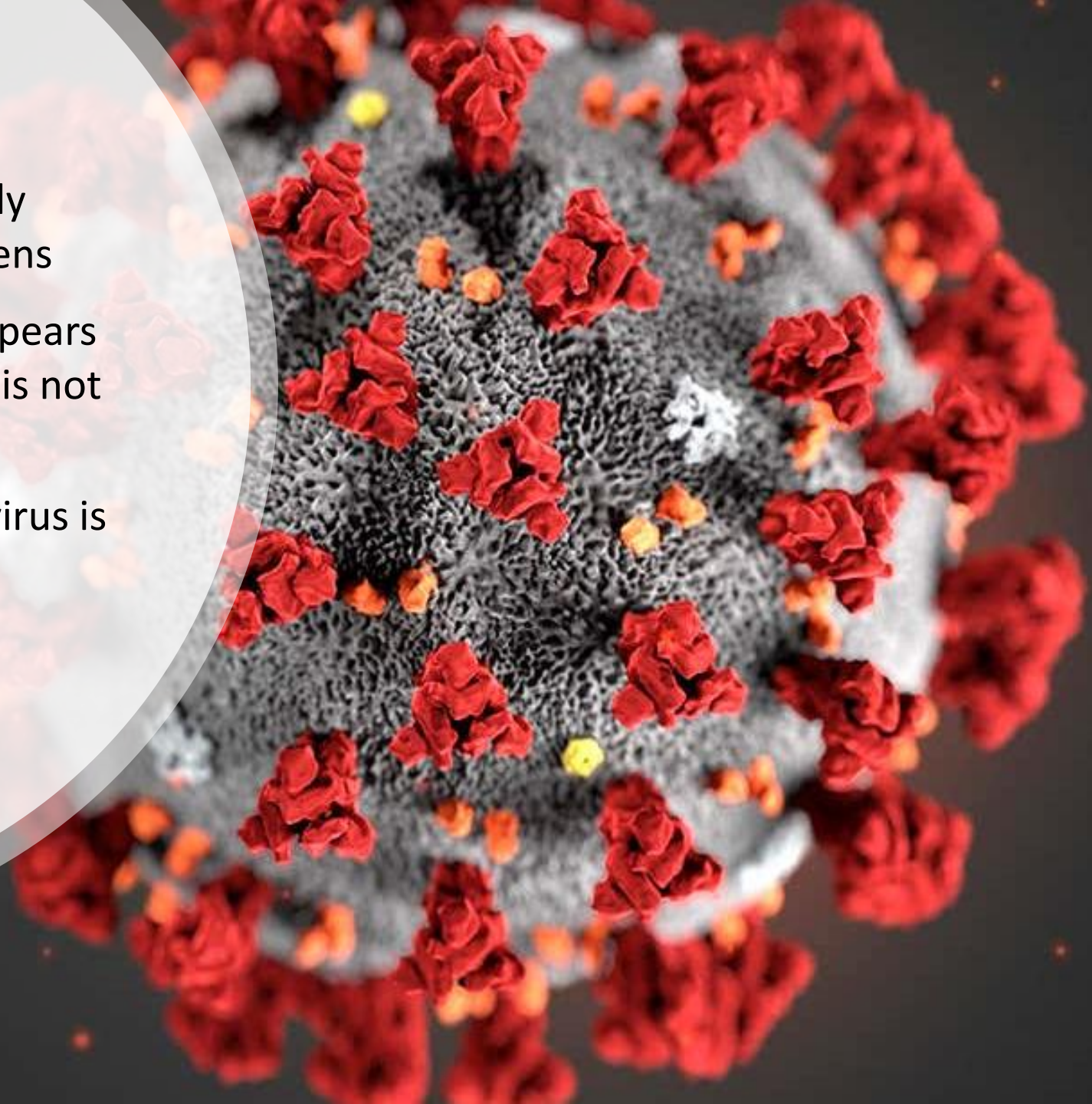
The disease manifests with a spectrum of symptoms ranging from mild upper respiratory tract infection to severe pneumonitis, acute respiratory distress syndrome and death



- Over 11.5 million people have tested positive
- At this stage it is not possible to gauge an accurate account of the number of neonates infected by Covid-19.
- Many reviews are reports on case studies and anecdotal experience



- Usually babies become acutely unwell from infective pathogens
- With the Covid-19 virus, it appears that the neonatal population is not significantly affected
- Knowledge about this novel virus is rapidly emerging



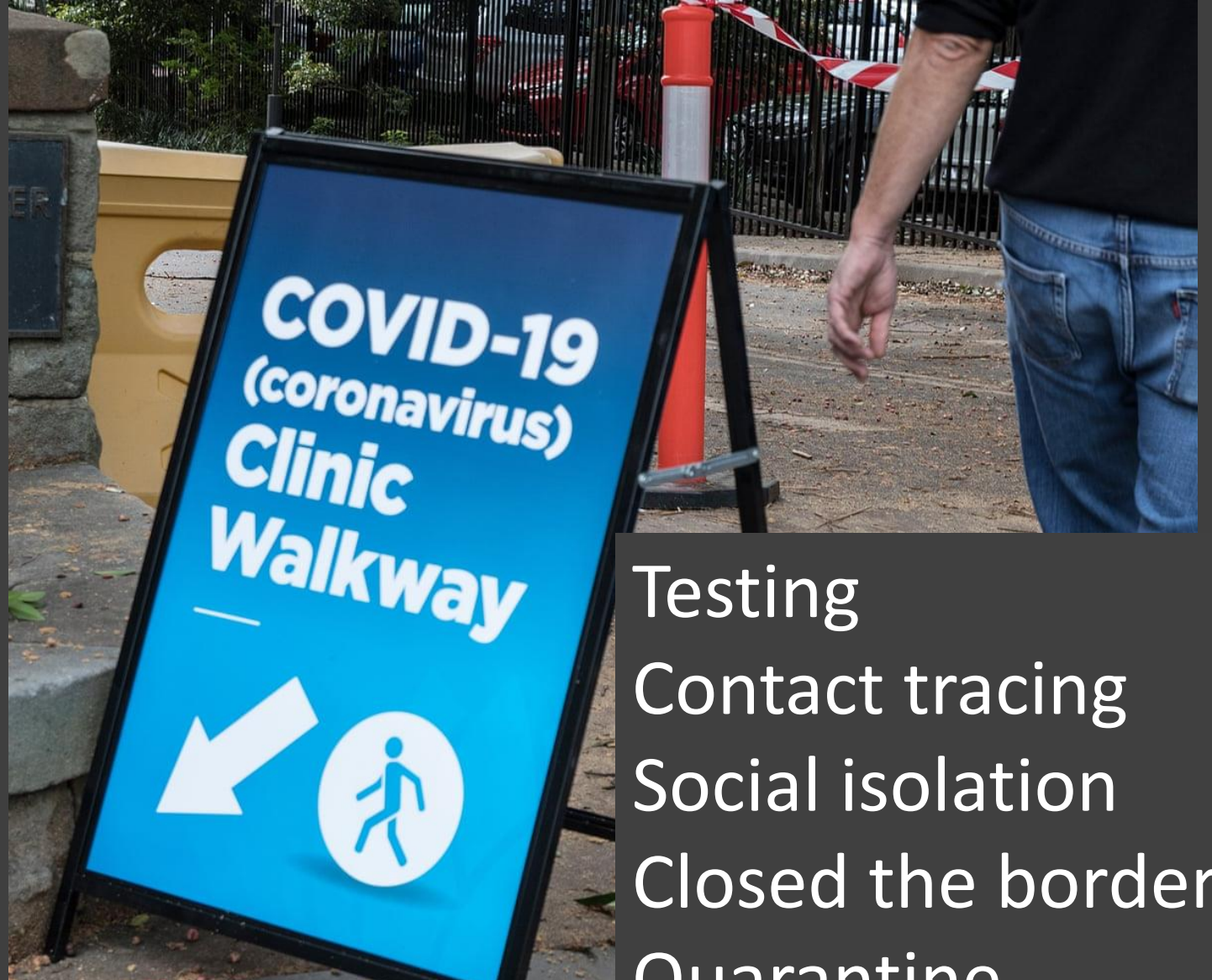
A 3D rendering of a globe showing the Earth's continents and oceans. A large, semi-transparent Australian flag is draped over the right side of the globe, partially obscuring it. The flag features the Union Jack in the canton, a large white seven-pointed star, and a smaller white five-pointed star. The globe is set against a dark background. On the left side, there is a grey vertical bar with a white diagonal line. The text 'Arabia' is visible on the left side of the globe, and 'Indi' and 'Ocea' are visible at the bottom left.

A map of the African continent with the Great Lakes region highlighted in blue. The highlighted area includes Chad, Sudan, South Sudan, Ethiopia, Kenya, and Tanzania. Surrounding countries are labeled in black text, including Morocco, Algeria, Libya, Egypt, Saudi Arabia, Yemen, Oman, Syria, Iraq, Iran, Turkey, Greece, Italy, Romania, Spain, Portugal, Tunisia, Mauritania, Mali, Niger, Nigeria, Guinea, Burkina Faso, Ghana, Western Sahara, Mauritania, Mali, Niger, Nigeria, Chad, Sudan, South Sudan, Ethiopia, Kenya, Somalia, DR Congo, Angola, Zambia, Mozambique, Namibia, Botswana, Zimbabwe, Madagascar, and South Africa. The Gulf of Guinea and Gulf of Aden are also labeled. The South Atlantic Ocean is visible to the west. A decorative graphic of a globe is in the top right corner.

The Australian Government's health response to the COVID-19 outbreak aims to:

1. minimise the number of people becoming infected or sick with COVID-19
2. minimise how sick people become and the mortality rate
3. manage the demand on our health systems
4. help to manage own risk and risk to family and community





Testing
Contact tracing
Social isolation
Closed the borders
Quarantine



Australian Government

Tunapotoka tena huko,
ni majukumu ya sisi sote

TUNZA SALAMA YETU YA COVID **FANYA 3 HIYO**



OSHA
MIKONO



UMBALI WA
MWILI



UWE NA
APP

Na ikiwa unapata dalili za mafua au kama
homa ya mafua, kaa nyumbani na ongea
na daktari wako kuhusu kupimwa.



Australian Government

As we get out there again,
it's up to all of us to

STAY COVID FREE **DO THE 3**



WASH
HANDS



PHYSICAL
DISTANCE



HAVE
THE APP

And if you're experiencing cold or
flu-like symptoms, stay home and speak
to your doctor about getting tested.



CURRENT STATUS OF CONFIRMED CASES

8,886

Total cases

106

Total deaths

7,487

Cases recovered

8

CURRENT CASES
INTENSIVE CARE UNITS (ICU)

ACT	NSW	NT	QLD	SA	TAS	VIC	WA
0	1	0	0	0	0	7	0

46

CURRENT CASES
ADMITTED TO HOSPITALS

ACT	NSW	NT	QLD	SA	TAS	VIC	WA
0	3	1	1	0	0	41	0

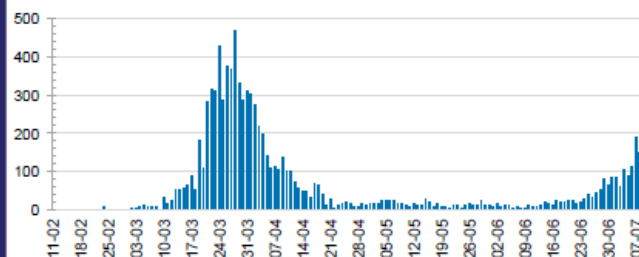
2,856,406

0.3% POSITIVE

TOTAL TESTS
CONDUCTED

ACT	NSW	NT	QLD
33,223	979,060	15,476	398,844
POSITIVE	POSITIVE	POSITIVE	POSITIVE
0.3%	0.4%	0.2%	0.3%
SA	TAS	VIC	WA
165,600	54,639	1,008,677	200,887
POSITIVE	POSITIVE	POSITIVE	POSITIVE
0.3%	0.4%	0.3%	0.3%

DAILY NUMBER OF REPORTED CASES

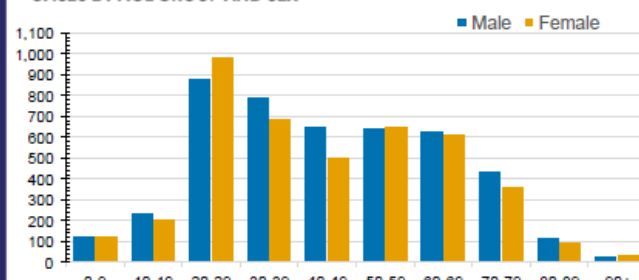


CASES IN AGED CARE SERVICES

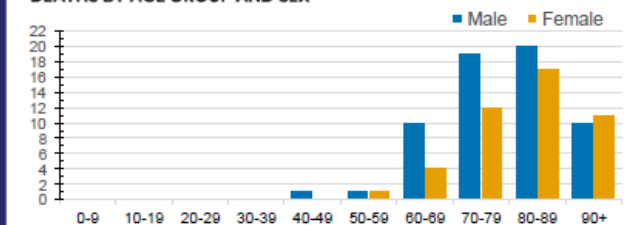
Confirmed Cases	Australia	ACT	NSW	NT	QLD	SA	TAS	VIC	WA
Residential Care Recipients	72 [40] (31)	0	61 [32] (29)	0	1 (1)	0	1 (1)	9 [8]	0
In Home Care Recipients	33 [28] (4)	0	13 [13]	0	8 [8]	1 [1]	5 [3] (2)	5 [3] (1)	1 (1)

Cases in care recipients [recovered] (deaths)

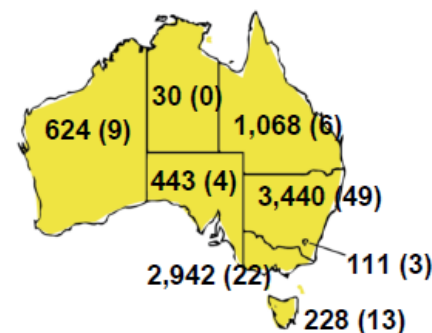
CASES BY AGE GROUP AND SEX



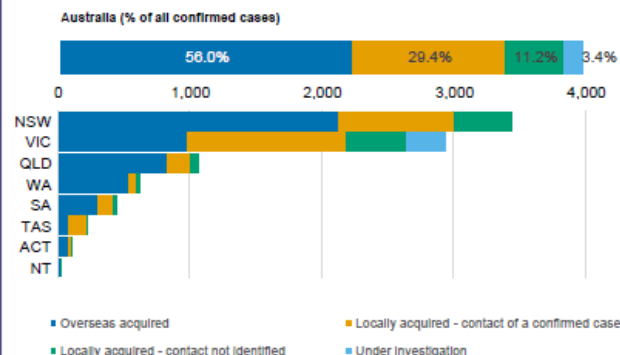
DEATHS BY AGE GROUP AND SEX



CASES (DEATHS) BY STATE AND TERRITORIES

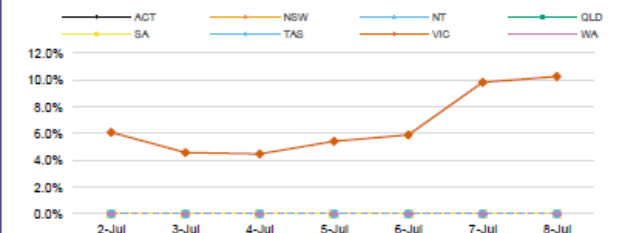


CASES BY SOURCE OF INFECTION



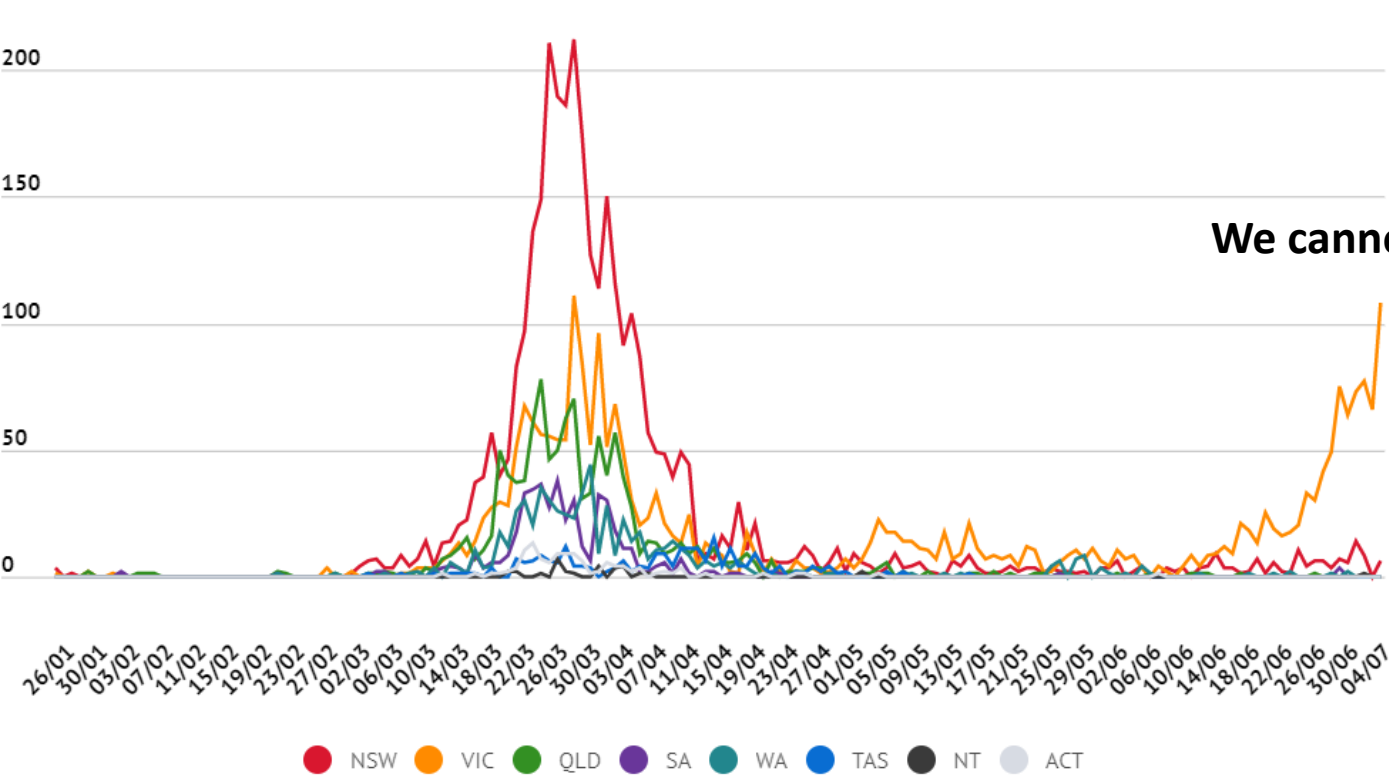
PUBLIC HEALTH RESPONSE MEASURE

Proportion of total cases under investigation



Diagnoses in states and territories over time

NSW accounts for most confirmed cases

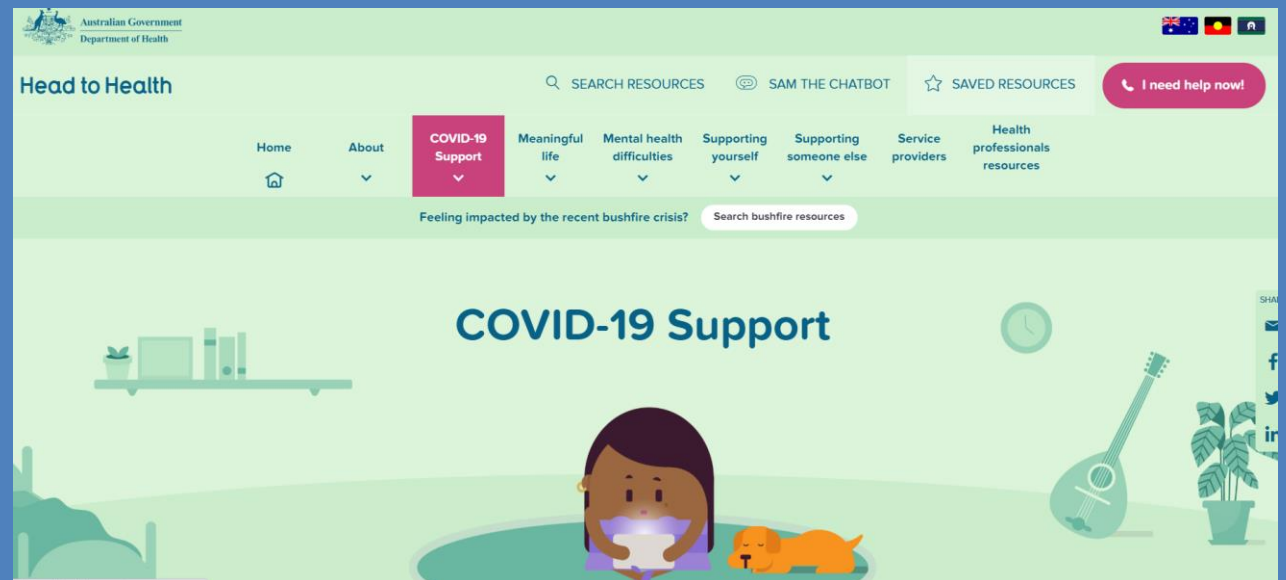


Mental Health - \$500 million investment for mental health and suicide prevention

At risk populations

- Health care workers
- Those in quarantine
- Unemployed

Mental Health



NSW Government secures \$21m for domestic violence support during coronavirus lockdown

By Lily Mayers

Posted 26 May 2020



So far today police in Australia would have dealt with on average

258 domestic violence matters

Learn more about these numbers →

Family and domestic violence support:

- [1800 Respect national helpline:](#)
1800 737 732
- [Women's Crisis Line:](#)
1800 811 811
- [Men's Referral Service:](#)
1300 766 491
- [Lifeline](#) (24 hour crisis line):
131 114
- [Relationships Australia:](#)
1300 364 277
- [NSW Domestic Violence Line:](#)
1800 656 463

Domestic Violence



Long term
outcomes



- Keep mothers and babies together
- Breastfeeding
- Skin to Skin/ KMC

Home Health Topics ▾ Countries ▾ Newsroom ▾ Emergencies ▾ Data ▾ About Us ▾


EMERGENCY

Coronavirus disease (COVID-19) pandemic

[All info here→](#)

COVID-19 quick links >

- Scam alert +
- Advice for the public +
- Advice for health workers +
- Country & Technical Guidance +
- Situation updates +
- Research and Development +



Coronavirus disease (COVID-19) Situation dashboard

This interactive dashboard/map provides the latest global numbers and numbers by country of COVID-19 cases on a daily basis.

For the latest on **#COVID19** watch the WHO press conference

Monday, Wednesday & Friday from 15:00 GMT at www.who.int/COVID-19 #coronavirus #COVID19

Watch the @WHO press conference for the latest updates on the global **#COVID19** response

Each Monday, Wednesday & Friday from 3pm GMT

Evidence-based advice

COVID-19

Zero separation. Together for better care!

Keep preterm and sick babies
close to their parents.

#TogetherForBetterCare

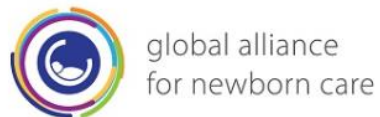
#ZeroSeparation



Worldwide we see huge inequalities in how much time parents can spend with their babies in neonatal units during the COVID-19 pandemic.^{1,3} Separation of babies and parents is harmful!⁴⁻⁷ Our common vision is that every baby born receives the best start in life and this means that babies should be close to their parents, even in times of COVID-19!^{3,8}

Joint statement by the GLANCE Chair Committee

1. Lavizzari A. Pediatr Res (2020), Epub
2. Vavouraki E. Eur J Midwifery 4, 21 (2020)
3. Davanzo R. Mat Child Nut 16 (2020), Epub
4. Latva R. Arch Pediatr Adolesc Med 158, 1153-1157 (2004)
5. Conde-Agudelo A. Cochrane Database Syst Rev 8 (2016)
6. Reynolds LC. J Perinatol 33, 636-641 (2013)
7. Feldman R. Biol Psychiatry 75, 56-64 (2014)
8. WHO. Clinical management of COVID-19: interim guidance (27 May 2020).



global alliance
for newborn care



european foundation for
the care of newborn infants



Pregnancy



Birth



Breastfeeding



NICU



Discharge and follow-up



global alliance
for newborn care

About us COVID-19 Health Topics Activities Supporters Donate

COVID-19



SUPPORT EACH OTHER

BOARDPRESIDENT@COINNURSES.ORG